



Choice Basics® Wall Cabinet Instructions

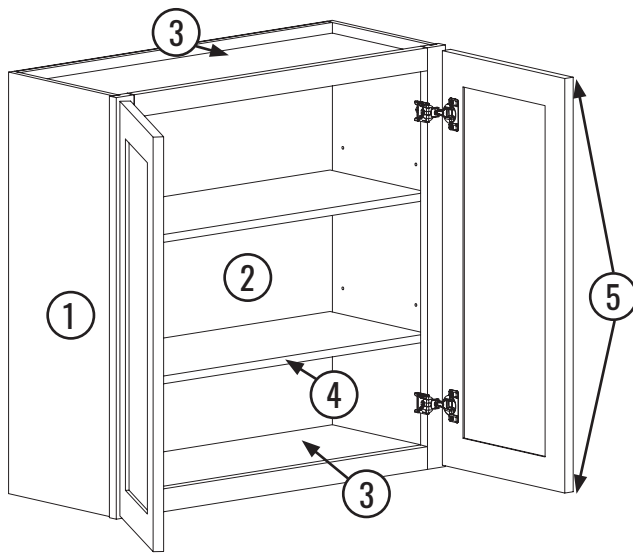
Tools Required

- Power drill with adjustable torque setting and a #2 Phillips tip
- Utility knife
- Rubber mallet and scrap piece of wood
- Wood glue
- Small level
- A padded work surface

NOTE: Use a shipping blanket or a work surface wrapped in carpet.

Included Cabinet Box Pieces

NOTE: The quantity of adjustable shelves depends on the height of the cabinet. Refer to your Choice Cabinet Specification Guide for the shelf quantities per wall cabinet.



1 • side panel x 2

2 • back panel

3 • top and bottom panels

4 • adjustable shelf

5 • face frame with door(s) attached

Included Screws and Hardware

NOTE: All screws and clips are packed in bags to protect cabinet parts during shipping.

- 1 1/8" gold flat head screws for back panel
- 7/8" pan head screws for pocket screw holes
- 1" silver flat head screws for side panels
- Metal shelf clips



Choice Basics® Wall Cabinet Instructions

Unpacking the Cabinet

1. Cut the box carefully using utility knife along the taped seams
2. Remove the cabinet pieces and screws

NOTE: We use protective foam between each layer of parts. Each wall cabinet comes with the door(s) attached to the face frame. The face frame and door(s) are wrapped and placed in the interior of the box. This provides maximum protection for the face frame and door(s).

3. Place screws and shelf clips within reach

NOTE: Place the screws and shelf clips away from the finished cabinet pieces to avoid accidental damage.

Unpacking the Cabinet

1. Place the face frame facing down on the padded work surface
2. Place one cabinet box side panel into the dado on the face frame. The finished side should be facing in. Attach using the 7/8" pan head screws. Attach the second cabinet box side panel the same way
3. Slide the top panel into the dados on the cabinet box side panels and the face frame. The finished side should be facing in. Attach using the 7/8" pan head screws

4. Attach the bottom panel by repeating step 3

NOTE: The top and bottom panels are interchangeable to create a left or right hinge application. Cabinet can be turned upside down if hinge placement needs to be changed.

5. Place the back panel flush with the top, bottom, and cabinet box side panels. Attach the back panel to the cabinet box side panels using the 7/8" pan head screws. Attach the back panel to the top and bottom panels using the 1 1/8" gold flat head screws
6. Adjust the door(s) until level (See ADJUSTING HINGES)



Adjusting Hinges

- Each hinge has arrows indicating the direction of adjustment
- Adjust the hinges after assembly using the level
- Make sure that all doors are level with one another

NOTE: Consider adjusting annually due to seasonal dry or humid interior conditions

- An over-the-range cabinet may require additional adjustments throughout the year

